



**G**UST **L**OAD **A**LLEVIATION TECHNIQUES ASSESSMENT ON  
WIND **T**UNNEL **M**ODEL OF ADVANCED **R**EGIONAL AIRCRAFT

SEVENTH FRAMEWORK PROGRAMME  
CLEAN SKY JOINT UNDERTAKING  
CFP TOPIC NO. JTI-CS-2013-1-GRA-02-022:

## 2<sup>ND</sup> PERIODIC REPORT FIGURES

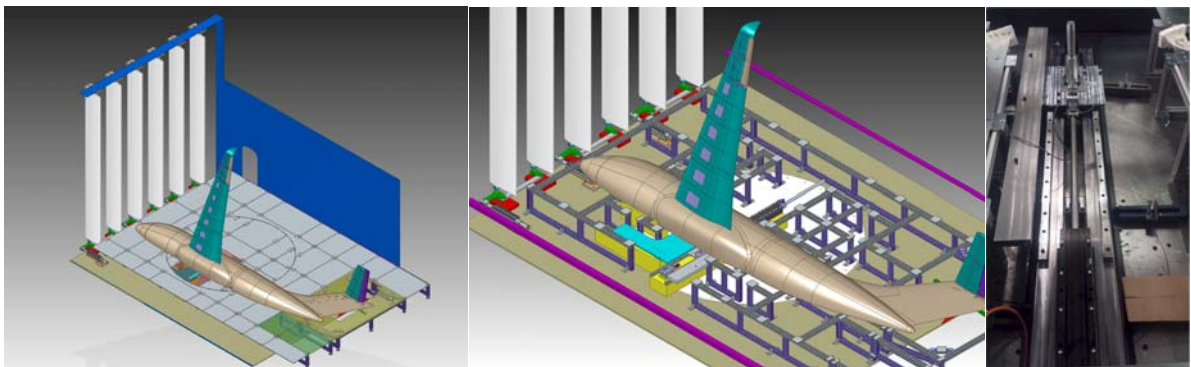


Figure 1: The model installed on the dummy floor (left and center) and the WAS system (right).

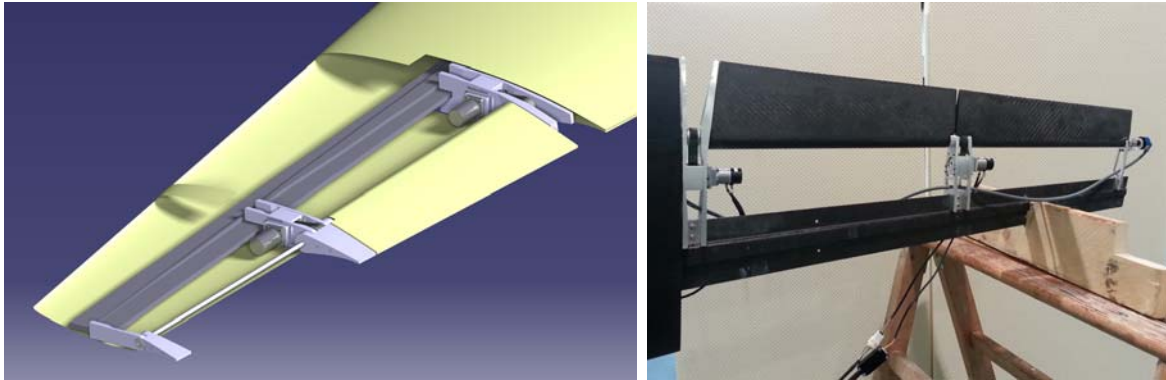


Figure 2: Aileron motor actuators coupled with their position sensors (encoder and potentiometer).



Figure 3: Fuselage and wing during the final assembling.



Figure 4: The Gust Generator installed in the wind tunnel during the calibration phase.

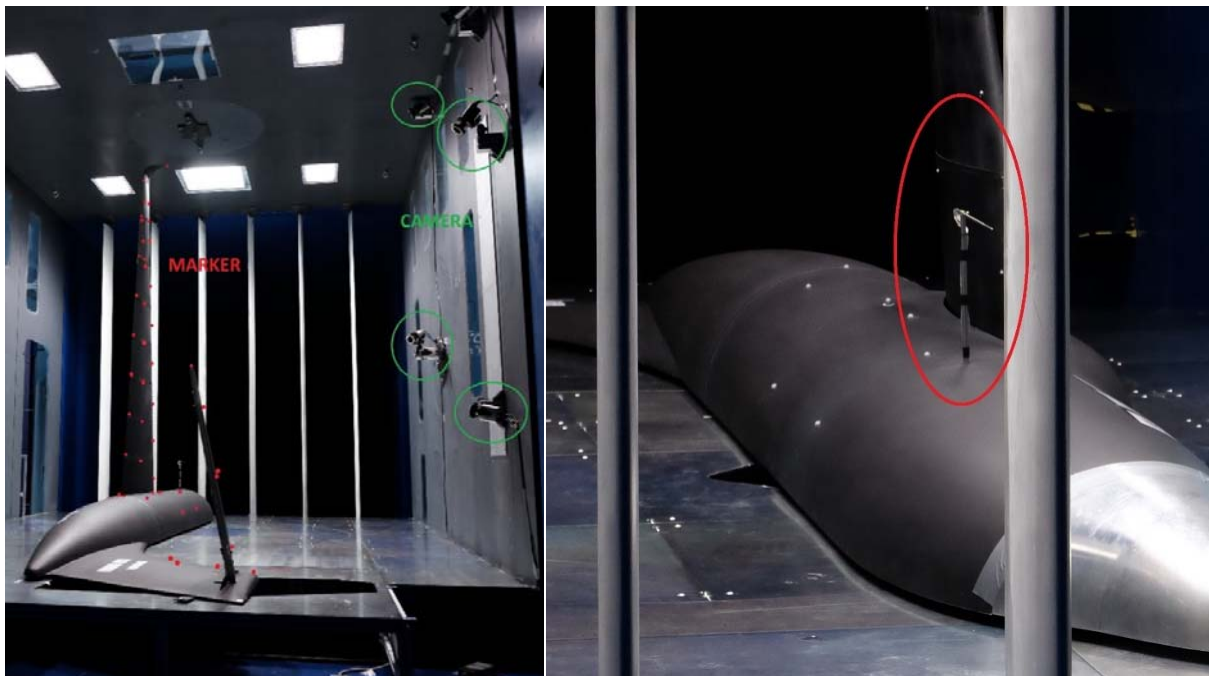


Figure 5: Photos of the WT model with indication of displacement and AOA measurements.



Figure 6: The GLAMOUR model inside POLIMI's wind tunnel ready for gust loads alleviation tests.